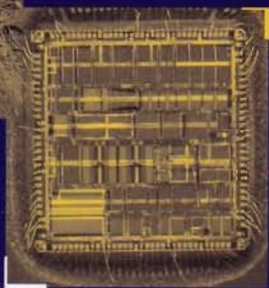
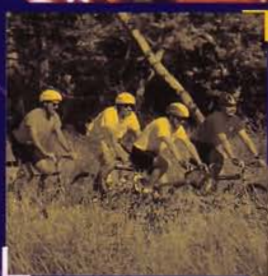


VLSI AT QUALCOMM:

MAKING CDMA HAPPEN

C
D
M
A

VLSI



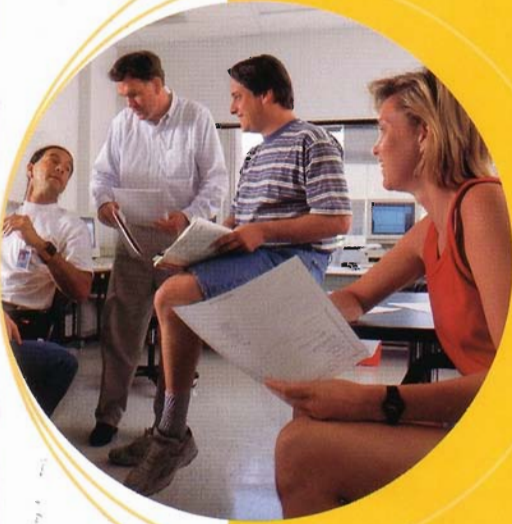
digital wireless communications

QUALCOMM

8 kbps
4 kbps
800 kbps

Input
Speech
Signal
energy
dynamic
Rate
Thresholds

Exciting place to work



NUMBER ONE

SUPPLIER OF SILICON

FOR

CODE DIVISION MULTIPLE ACCESS

(CDMA)

It may surprise you to know that QUALCOMM, the leader in digital wireless communications, is also one of the largest silicon producers. In fact, we're the number one supplier of silicon for Code Division Multiple Access (CDMA), the technology QUALCOMM perfected. Not only do we supply silicon for our in-house products, we're also the leading OEM supplier to companies around the world. And the increasingly wide acceptance of CDMA technology translates into more opportunities for you and for QUALCOMM.

We're also deeply committed to research and development. Since Dr. Irwin Jacobs, Dr. Andrew Viterbi, and other leading visionaries founded the company in 1985, we have consistently focused on technological innovation as the key to our success. Our rapid growth and increasingly dominant role in wireless communications prove that this approach works.

What does this mean to you? It means when you join QUALCOMM, you join a forward-looking company with circuit design activities that cover the full spectrum of analog, digital, and mixed signal devices. Whatever your discipline, you can focus on designing a good chip.

You work in an environment where state-of-the-art tools and technologies are used to push the envelope in custom and semi-custom designs optimized for low power. An environment where your supervisor, a highly qualified engineer, dresses casually and accords you the respect you deserve. Where you use tools that really work, so you spend your time debugging the circuit, not the tools.

You get a responsible assignment immediately, typically as a member of a small group (6-10 engineers) charged with developing creative answers to challenging problems. Because groups are small, you have autonomy in your piece of the project. You are individually acknowledged and rewarded for your contributions. And our dual-track approach to advancement assures that your challenges continue as you move up the technical/managerial ladder.

WE PRODUCE INTEGRATED

CIRCUITS FOR FORWARD

ERROR CORRECTION,

FREQUENCY SYNTHESIS,

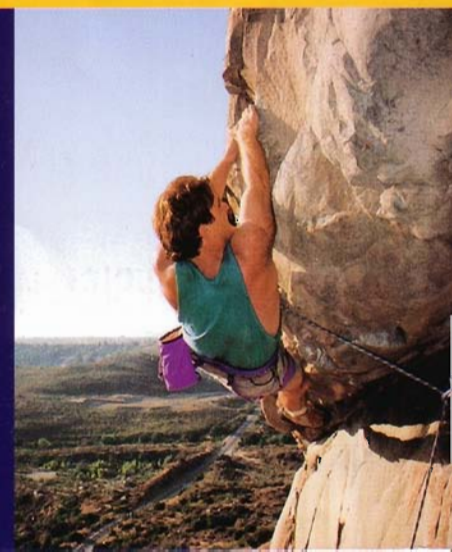
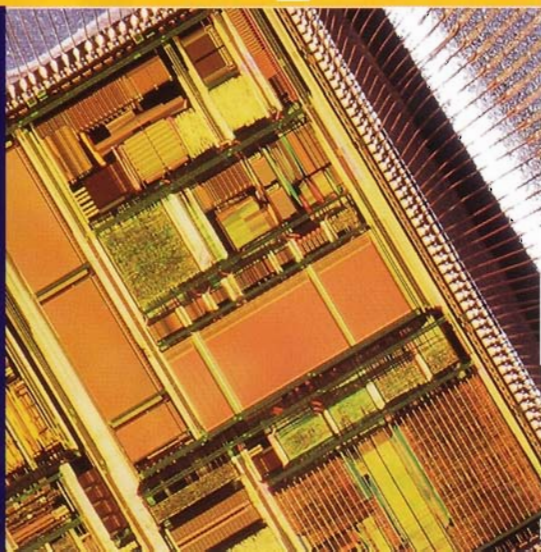
AUTOMATIC GAIN CONTROL

AND CDMA.

WHATEVER YOUR DISCIPLINE,

YOU CAN FOCUS ON

DESIGNING A GOOD CHIP.



Exciting products to work on

Q
U
A
L
C
O
M
M

We design most of the circuits needed at every phase of digital communication, whether it be for conventional cellular, PCS, wireless local loop, or satellite systems. We produce integrated circuits for forward error correction, frequency synthesis, automatic gain control and CDMA. Recent developments have included:

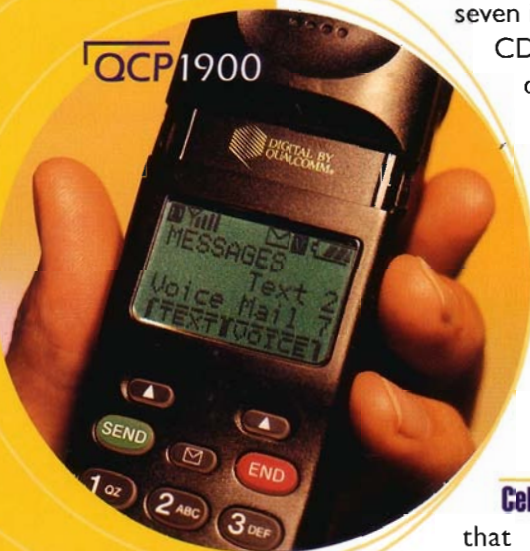
Mobile station modem A complete, single integrated circuit that incorporates the functionality previously provided by seven individual ICs. It is the complete solution for CDMA and FM digital baseband processing for dual-mode (CDMA/FM) cellular telephones. The predecessor (first generation) chip was described in detail in an article that appeared in the March 1993 issue of the IEEE Journal of Solid-State Circuits.

Analog baseband processor This chip, which replaces 17 discrete components, bridges the digital and analog (RF) processing sections of the CDMA/FM dual-mode cellular phone.

Cell site modem Another multifunctional device that reduces costs and enhances system integration, in this case within the base station itself. This modem integrates CDMA modulator/demodulator and Viterbi decoder modules for reduced cost, improved functionality and increased performance.

Dual mode AGC Receive and transmit automatic gain control amplifiers designed specifically for dual-mode CDMA/FM cellular applications. They maintain consistent power levels over changing distances between subscriber phones and cell sites and where interference exists because of multipath fading, terrain topology, and environmental conditions in a cellular network. They're also ideal for a number of other wireless and general purpose applications.

QCP1900



WHEN YOU JOIN

QUALCOMM,

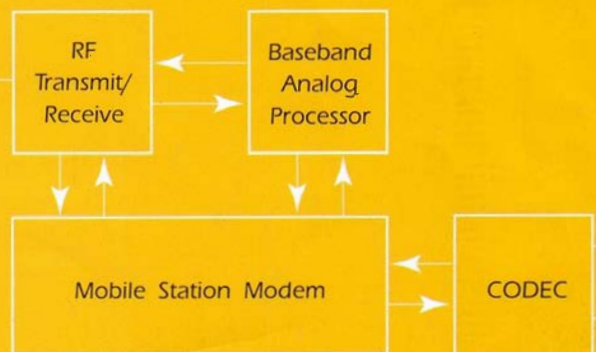
YOU JOIN A

FORWARD-LOOKING

COMPANY

MAKE YOUR MARK AT THE
BEST DESIGN HOUSE FOR
DIGITAL WIRELESS SYSTEMS

Antenna



Being the best requires having the best people. Submit your resume if your qualifications match our grid below:

| QUALIFICATIONS | degree | | | discipline | | experience | | | specialization | | | | language/tools | | | | | | | | | | | | |
|--------------------------|--------|----|-----|------------|----|----------------|-----------|-----------|----------------|--------------|----------------|------------------------|---------------------------|-------------|-------------------|-----------------|-------|------|------|------|----------|---------|------|---------|---|
| | BS | MS | PhD | CS | EE | Device Physics | 0-2 years | 3-8 years | 9+ years | Logic Design | Circuit Design | Digital Communications | Simulation & Verification | CMOS Layout | Foundry Interface | Microprocessors | C/C++ | UNIX | VHDL | Perl | Synopsys | Cadence | Epic | H-spice | |
| RAM/ROM Design | | | | ● | ○ | ● | ○ | ● | ○ | ○ | ○ | ● | ● | ○ | | | | ○ | | ○ | | ○ | ○ | ○ | ● |
| CAD | | | | ● | ○ | ○ | ● | ○ | ○ | ○ | ○ | ● | ● | ○ | ○ | | | ● | ● | ○ | | ○ | ○ | ○ | ○ |
| VLSI Design | ● | ○ | ○ | ○ | ○ | ● | ○ | ○ | ○ | ○ | ○ | ○ | ○ | ○ | ○ | ○ | ○ | ○ | ○ | ○ | ○ | ○ | ○ | ○ | ○ |
| Spice/Modeling | | | | ● | ○ | ○ | ○ | ○ | ○ | ○ | ○ | ○ | ○ | ○ | ○ | ○ | ○ | ○ | ○ | ○ | ○ | ○ | ○ | ○ | ○ |
| Integration/Verification | ● | ○ | | | ○ | ○ | ○ | ○ | ○ | ○ | ○ | ○ | ○ | ○ | ○ | ○ | ○ | ○ | ○ | ○ | ○ | ○ | ○ | ○ | ○ |
| Applications | ● | ○ | | | ○ | ○ | ○ | ○ | ○ | ○ | ○ | ○ | ○ | ○ | ○ | ○ | ○ | ○ | ○ | ○ | ○ | ○ | ○ | ○ | ○ |

● REQUIRED ○ DESIRED

NEED MORE INFO?

You can call us at (619) 658-JOBS (5627), send us E-mail at jobs@qualcomm.com or visit our web site at <http://www.qualcomm.com>

YOU CAN SEND US YOUR RESUME VIA:

Fax: (619) 658-2110
 E-mail: (ASCII only) resumes@qualcomm.com
 Post: QUALCOMM
 Human Resources
 P.O. Box 919013
 San Diego, CA 92191-9013

